

Two Software Options and a Cloud Application for Production Management

■ Textile RIP software for apparel and interior applications

TxLink5™

Equipped with user-friendly features for textile production.

■ Beginner-friendly RIP software designed for ease of use and simplicity

Raster Link 7

Mimaki Cloud Technology

PICT

PICT allows users to monitor printer operation and ink usage remotely. It supports better planning by providing real-time data on operational status and performance. PICT helps with scheduled maintenance and preparing for ink refills, ensuring smooth and efficient production.

✓ Production control

✓ Prepare for ink refilling

✓ Scheduling of maintenance etc...

Cloud

Environmentally Certified Inks for Waterless Textile Printing

TP410, Sb420, Sb411

Safety and environmental friendliness are exceptional:
TP410 is bluesign® APPROVED and Sb420/Sb411 are ECO PASSPORT certified.

■ Main Specifications

Item		Tx330-1800B	Tx330-1800
Print head		On-demand piezo head	
Print resolution		300, 600, 900, 1200dpi	
Ink	Type/Colour	Textile Pigment Ink TP410 C/M/Y/K/R/G/B/Lk Dye Sublimation Ink Sb420 Bl/M/Y/K/Lb/Lm At hybrid ink set TP410 C/M/Y/K Sb420 Bl/M/Y/K	Textile Pigment Ink TP410 C/M/Y/K/R/G/B/Lk Dye Sublimation Ink Sb420 Bl/M/Y/K/Lb/Lm At hybrid ink set TP410 C/M/Y/K Sb420 Bl/M/Y/K Sublimation Transfer Ink Sb411 Bl/M/Y/K *Select 2 from the above 3 types
	Capacity	2L Ink Pack	
	Max. print width	1,890mm(74.4in)	Fabric : 1,910mm(75.2in)/ Transfer paper : 1,940mm(76.4in)
Media	Max.width	1,900mm(74.8in)	Fabric : 1,920mm(75.6in)/ Transfer paper : 1,950mm(76.8in)
	Max.thickness	5.0mm(0.2in)	5.0mm(0.2in)
	Roll weight	40kg(88.2lb)2~3in media roll 34kg(75.0lb)1~1.5in media roll	40kg(88.2lb)
Interface		Ethernet 1000BASE-T(recommended), USB2.0 Hi-Speed	
Power supply		AC100~120V/200~240V±10% 5A 50/60Hz±1Hz	AC100~120V/200~240V±10% 3A 50/60Hz±1Hz
Power consumption		Max. 500W or less Min. 4.5W or less	Max. 300W or less Min. 4.5W or less
Safety standard		VCCI-ClassA, FCC ClassA, IEC62368-1 compliant ETL, CE marking(EMC Directive,Low Voltage Directive,Machinery Directive,RoHS Directive), CB certification, REACH, EnergyStar, RCM mark, KC certification, UKCA mark	
Operational environment	Temperature	20-30 degC / 68-86 degF	
	Humidity	35-65% Rh(No condensing)	
	Guaranteed accuracy temperature	20-25 degC / 68-77 degF	
	Dust level	0.15mg/m³ (Equivalent to a general office environment)	
Outside dimensions(WxDxH)		3,230mm×1,912mm×1,900mm (127.1×38.0×74.8in)	3,230mm×965mm×1,857mm (127.1×75.3×73.1in)
Weight		622kg(1371.3lb)	291kg(641.5lb)

■ Supplies

Item	Code	Remark
Textile Pigment Ink TP410	Magenta	TP410-M-2L
	Cyan	TP410-C-2L
	Yellow	TP410-Y-2L
	Black	TP410-K-2L
	Red	TP410-R-2L
	Green	TP410-G-2L
Dye Sublimation Ink Sb420	Blue	TP410-BL-2L
	Light Black	TP410-LK-2L
	Magenta	SB420-MD-2L
	Blue	SB420-BLD-2L
	Yellow	SB420-YD-2L
	Black	SB420-KD-2L
Sublimation Transfer Ink Sb411	Light Magenta	SB420-LMD-2L
	Light Blue	SB420-LBD-2L
	Magenta	SB411-MT-2L
	Blue	SB411-BLT-2L
	Yellow	SB411-YT-2L
	Black	SB411-KT-2L
Maintenance liquid 03	ML003-Z-K1	For routine Maintenance
Flushing liquid 03	FL003-Z-22	Automatic maintenance slot
Flushing liquid 03 2L	FL003-Z-2L	Flushing liquid for ink replacement

● Some of the samples in this catalog are artificial renderings. ● Specifications, design and dimensions stated in this catalog may be subject to change without notice (for technical improvements, etc). The corporate names and merchandise names written on this catalog are the trademark or registered trademark of the respective corporations. ● Inkjet printers print using extremely fine dots, so colours may vary slightly after replacement of the printing heads. Also note that if using multiple printer units, colours could vary slightly from one unit to other unit due to slight individual differences. ● The specifications described in this catalog are as of April 2025.

MIMAKI EUROPE BV
Stammerdijk 7E, 1112 AA Diemen, The Netherlands
www.mimakieurope.com | Tel. : +31 20 4627640
@MimakiEurope

For
**TEXTILES &
APPAREL**

A New Era of "Waterless" Digital Textile Printing

Direct-to-Textile Inkjet Printer

TX330-1800B

Belt-Fed Model

8-Colour Textile Pigment Ink, Including Green

Even more vibrant colours

Unique Belt Feeding System

Stable printing on stretchy fabrics

High-speed, high-density output up to 60m²/h

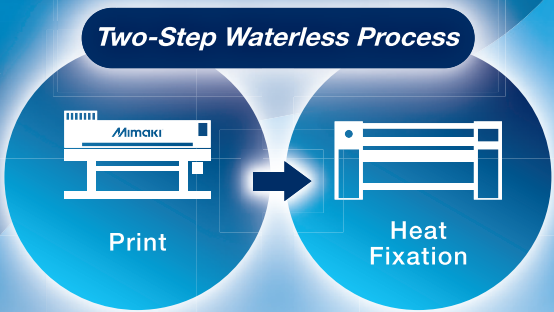
Easily switch between fabric & transfer paper printing

TX330-1800

Hybrid Model

Waterless & Sustainable Digital Textile Printing

Faster and More Beautiful than Ever!
A Simple, Waterless Process
Making Digital Textile Printing
More Accessible



*Depending on the fabric type, pre-treatment may be required before printing.

Now with Green! 8-colour inkset for exceptionally vibrant prints.

TX330-1800B
Belt-Fed Model

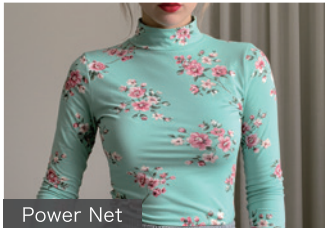
The sticky belt system securely conveys fabric without external tension, ensuring stable, high-quality printing—even on stretch fabrics and thicker materials. New textile pigment inks deliver vibrant colours, making them ideal for the production of apparel and home décor.



Knit



Lycra



Power Net



Pile

Up to 60m²/h! Vibrant soft sign production with high density.

TX330-1800
Hybrid Model

Supports both sublimation transfer and direct sublimation printing. With an easy switch between print mechanisms, you get the functionality you need, exactly when you need it.



Ink-Receiving Spacer
(for fabrics)



Platen
(for transfer paper)



Fabric Signage



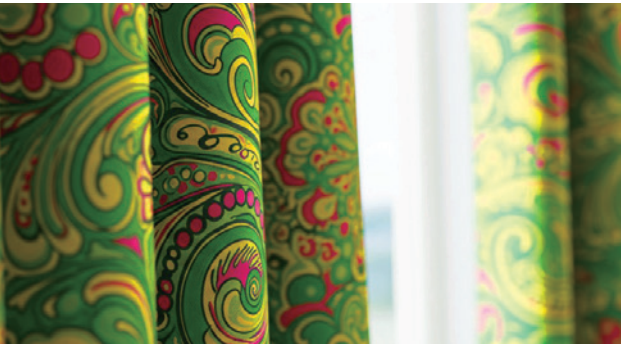
Interior Fabric

Ink Types Mimaki's Waterless Textile Printing Inks for Various Fabrics and Applications

Textile Pigment Ink
TP410

Suitable for printing on a wide range of fabrics, including natural and synthetic fibers. Ink is fixed only by heat treatment, simplifying post processing facilities.

*Additional equipment may be required depending on the printing conditions.



Dye Sublimation Ink
Sb420

Designed for direct printing on polyester fabric, delivering vibrant visual communications.



Sublimation Transfer Ink
Sb411

Used for printing on sublimation transfer paper, which is then transferred to polyester fabric with heat.

*Sublimation Transfer Ink (Sb411) is only compatible with the Tx330-1800 when using the hybrid ink set.

Hybrid Ink Set Using two types of ink in one machine expands application possibilities.

Textile Pigment Ink
TP410

Dye Sublimation Ink
Sb420

Belt-Fed Model Hybrid Model

Indoor and outdoor fabric signage and a wide range of apparel merchandise.



Sublimation Transfer Ink
Sb411

Dye Sublimation Ink
Sb420

Belt-Fed Model Hybrid Model

Complete coordination of stores and facilities using interior fabrics and fabric signage.



Textile Pigment Ink
TP410

Sublimation Transfer Ink
Sb411

Belt-Fed Model Hybrid Model

For all fashion and sports apparel, as well as custom-made items.



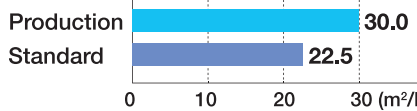
Equipped with "330 Engine" for high-resolution, high-definition printing

The Tx330 Series features Mimaki's flagship print engine, delivering fast and high-quality direct-to-textile printing.

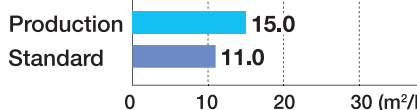
Production Speed

TX330-1800B

TP410-4C

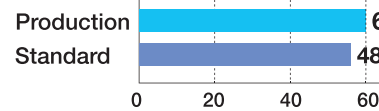


TP410-8C

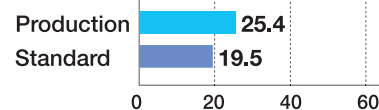


TX330-1800

Sb420-4C



Sb420-Hybrid



*Only the print modes primarily expected for each model are listed. For ink sets or modes not listed, please contact your local sales office.